

VITERBI SCHOOL OF ENGINEERING PHD STUDENT HOUSING

USCHousing

USC Housing is offering safe, convenient, and fully-furnished housing at competitive rates in Sierra Apartments to PhD graduate students in the Viterbi School of Engineering. Since apartments are reserved for the program participants, it provides residents the opportunity to live and study alongside their roommates—other Viterbi students. The program offers two room types and twelve month housing contracts.

Spaces in the program will be assigned first-come, first-served based on application date. Priority will be given to students submitting their applications to USC Housing by April 27, 2018. Housing applications will continue to be accepted after April 27, and assignments made on a space available basis.

Sierra (SIE) is located in North University Park, about three blocks from campus, where most of the university's graduate students live. It is within USC's Department of Public Safety's patrol zone and close to public transportation.

Contract Dates:

Graduate Full Year (12 Month) Contract

- Start: Monday, August 6, 2018, 8:30 AM
- End: Tuesday, July 31, 2019, 5:00 PM

Dates are for continuous occupancy during the contract period—apartments do not close for university breaks.

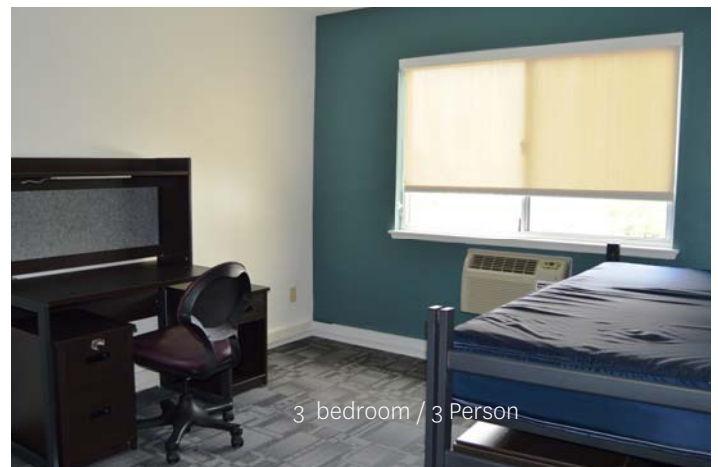
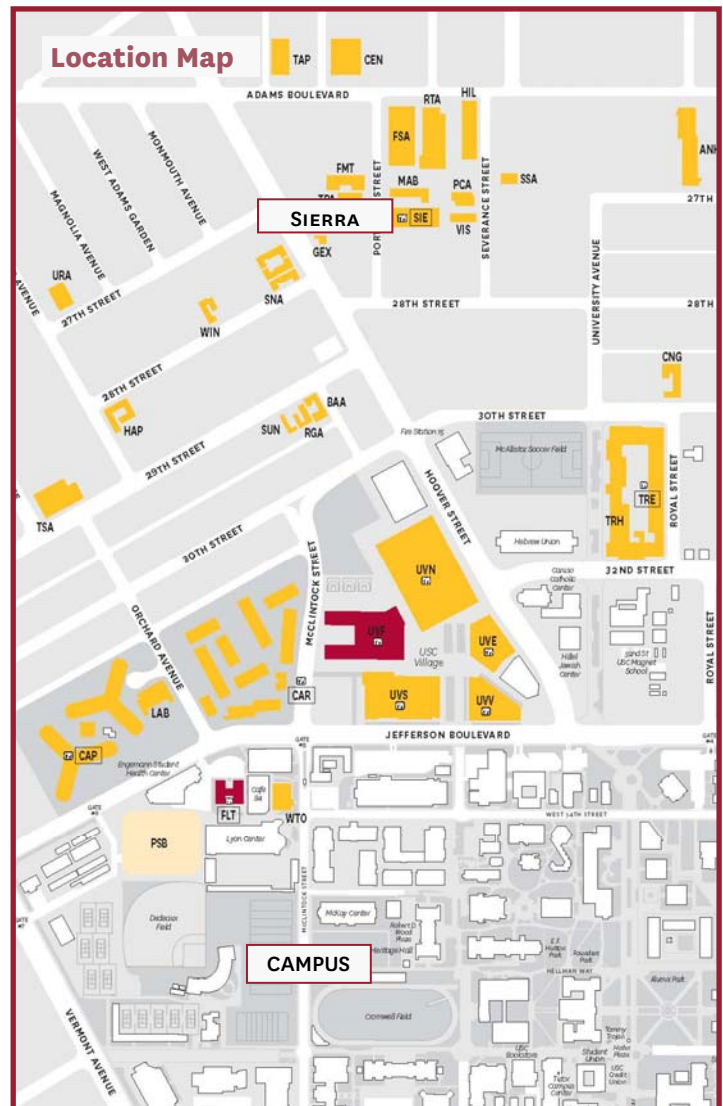
Parking and Transportation:

Spaces in the enclosed parking garage at Sierra are assigned by USC Transportation Services on a first-come, first-served basis and not all residents are ensured a space. Please check the Transportation website at: www.usc.edu/parking for more details .

There is a USC bus route stop right in front of Sierra; buses run between housing locations and the main campus every half hour.

Utilities:

All utility charges are included in the rent.



More information, including links to all the services offered by USC Auxiliary Services can be found on our website at housing.usc.edu



Sierra Apartments
2638 Portland Street

Room Types:

Sierra’s floor plan provides three bedrooms for three residents, with a shared bathroom, kitchen and bartop dining area.

Rent*:

- 3 Bedroom / 3 Person: \$1,130 per person, per month*

Amenities:

- Each resident has a full extra long (54” by 80”) bed and a desk and four dresser drawers.
- The full kitchen is equipped with a stove, full-size refrigerator, and sink. Residents will need to provide their own linens, small appliances and kitchen-ware.
- Individual air-conditioning units in each bedroom.
- Cable TV service, including HD channels, HBO and Showtime, as well as WiFi Internet service are included in rent.
- Laundry and recreation rooms.

Facility Description:

A large three story apartment building with a ground-floor garage, Sierra has a lounge and a spacious patio for residents’ relaxation. It is home to the area’s Customer Service Center.

* Information, including rents, is accurate as of the time of publication, but subject to change without notice



3 bedroom / 3 Person



Kitchen and Bartop Dining Area



Important Note: Application procedures listed here are for **new** students. Current USC Housing residents who wish to be considered for the Viterbi PhD housing program should apply during the USC Housing Renewal process in January.

HOUSING APPLICATION AND CONTRACTING

Apply on-line at:
<https://housing.usc.edu/gradportal>

New, incoming students may apply for housing once they have been admitted to the university and been issued a ten digit USC student identification number. *Online application for academic year 2018-2019 will be available February 1, 2018.*

In order for your application to be processed correctly it is **essential that you do the following** when applying:

- Select the Graduate Full Year (12 Month) 2018/2019 as your term
- List Sierra as your housing preference

In order for your application to be processed correctly it is **essential that you do the following** when applying:

- Select the Graduate Full Year (12 Month) 2018/2019 as your term
- List Sierra as your housing preference
- Select Viterbi School of Engineering as your graduate housing program

Log In

After you are admitted to USC, you will receive an email from USC Housing which will include your login information. You will not be able to apply for housing until you receive this email.

To log in, use your 10-digit USC ID number (no spaces or dashes) and the password emailed to you.

Profile

After you have logged in you will be asked to create a profile—some basic information about yourself.

Housing Term

Applicants should *only* request the “Graduate Full Year (12 Month) 2018/2019” term.

Application

Begin application

Personal and Contact Details

Profile Questions

This information can be used for roommate matching.

Application Category

Newly admitted students should choose “New to USC”.

Choose “Viterbi School of Engineering” for your graduate housing program.

List Housing Preferences

Be sure to list the Sierra 3B3P room type choice as your first preference. Applicants for the Viterbi PhD Program will be considered for Sierra spaces *only*.

Pay Application Fee

USC Housing cannot process your application without payment of the \$55 non-refundable application fee. (This fee cannot be waived.) Payment can be made by Visa, Mastercard, American Express or Discover cards.

Roommate Selection

If you would like to request a specific roommate from among the group applying for Viterbi Housing, you can add that person to your application by entering his / her name and ten digit USC ID number. Roommate requests must be mutual and you must both be of the same gender.

You can search our system for other students in your program by clicking Search by Details, then selecting the Viterbi program.

You may later request a specific roommate in writing by contacting USC Housing.

Assignments

Applicants must be certified with the university to be offered an assignment. Assignments will be made based on application date and space availability. Viterbi applicants who apply by April 27, 2018 will have priority for available apartments in Sierra. Applicants not assigned initially will be placed on a wait list and assigned if and when spaces come available through cancellation.

Once you have been assigned, you will be notified by e-mail and directed to the USC Housing web site to review and confirm your contract.

Rooms

Log back on to the portal and check this step to see your assignment.

Contracts

Pay Confirmation Fee

Your \$800 confirmation payment should be submitted electronically by Visa, Mastercard, American Express or Discover cards. Half of this fee will be credited back to you in the fall semester and half in the spring semester.

Contract and Finish

Here you will confirm your housing contract and agree to the terms of the Living Agreement.

- If you do not confirm the acceptance of your contract and make the confirmation payment by the due date indicated, your assignment will be cancelled and given to another applicant.

Cancellations

If you decide to cancel your application prior to being assigned or cancel your housing assignment prior to confirming your contract, print out and complete the cancellation form available on our website and send it to USC Housing Services. The application or assignment will be cancelled; the \$55 processing fee will *not* be refunded.

Once you have confirmed your contract and made the confirmation payment, you are responsible for the terms of the contract. You may, however, request cancellation by submitting a cancellation form.

- If your cancellation is granted by June 8, you will receive a refund of the contract-confirmation payment.
- If your cancellation is granted after June 8, you will not be eligible for a refund of any portion of the contract-